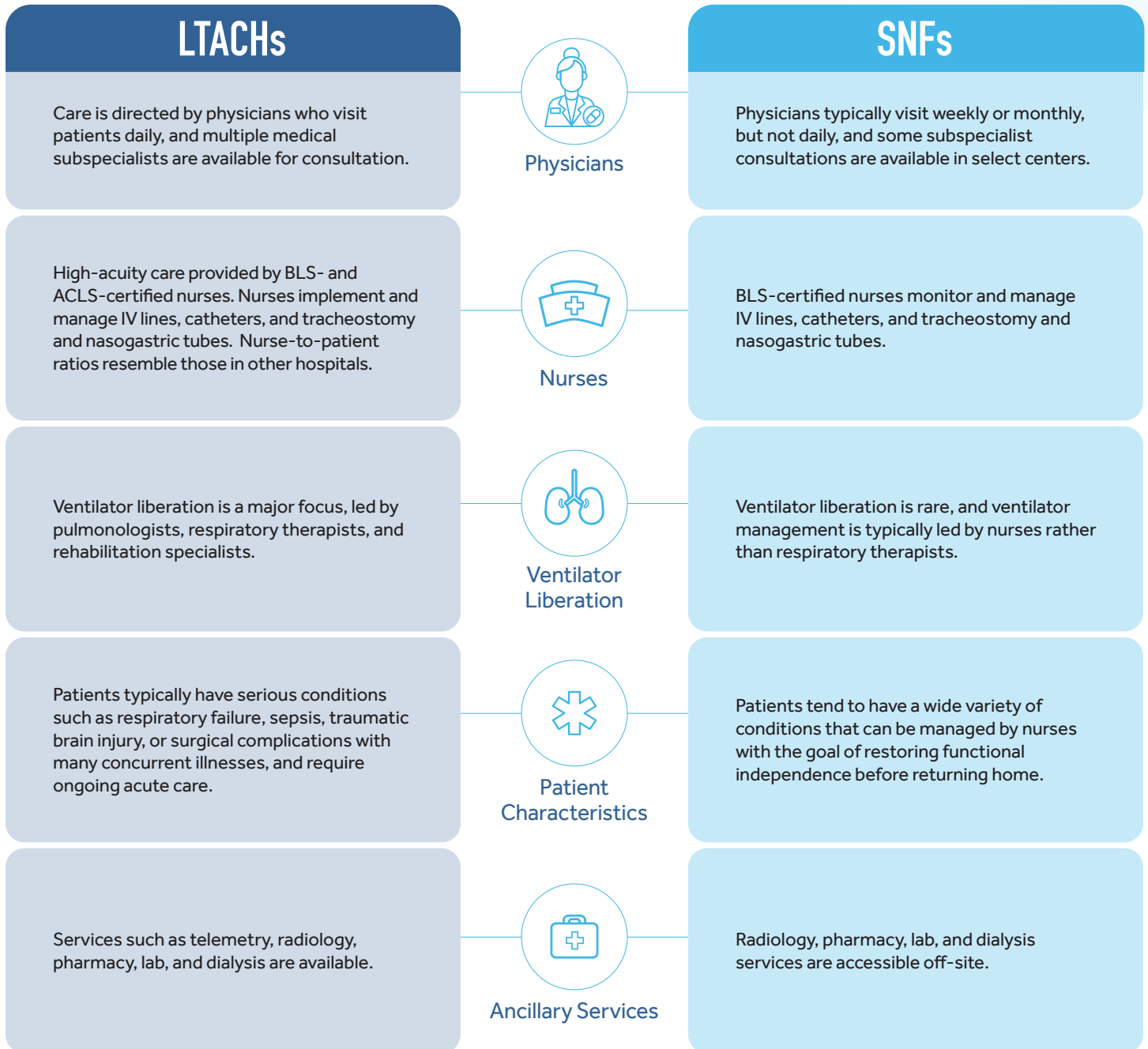


# 5 Setting Distinctions: LTACHs vs. SNFs

While long-term acute care hospitals (LTACHs) and skilled nursing facilities (SNFs) are often misunderstood as offering the same level of care, the unique expertise and resources available at LTACHs allow them to provide medically complex patients with specialized care that can reduce readmissions and care costs. Below are 5 key differences between LTACHs and SNFs that impact patient recovery.



**NEXT LEVEL CARE. NEXT LEVEL RECOVERY.**  
Cornerstone Specialty Hospitals provide specialized treatment and rehabilitation for medically complex patients.

Learn more about how Cornerstone Specialty Hospitals can improve outcomes for medically complex patients at [www.CornerstoneHospitals.com](http://www.CornerstoneHospitals.com).