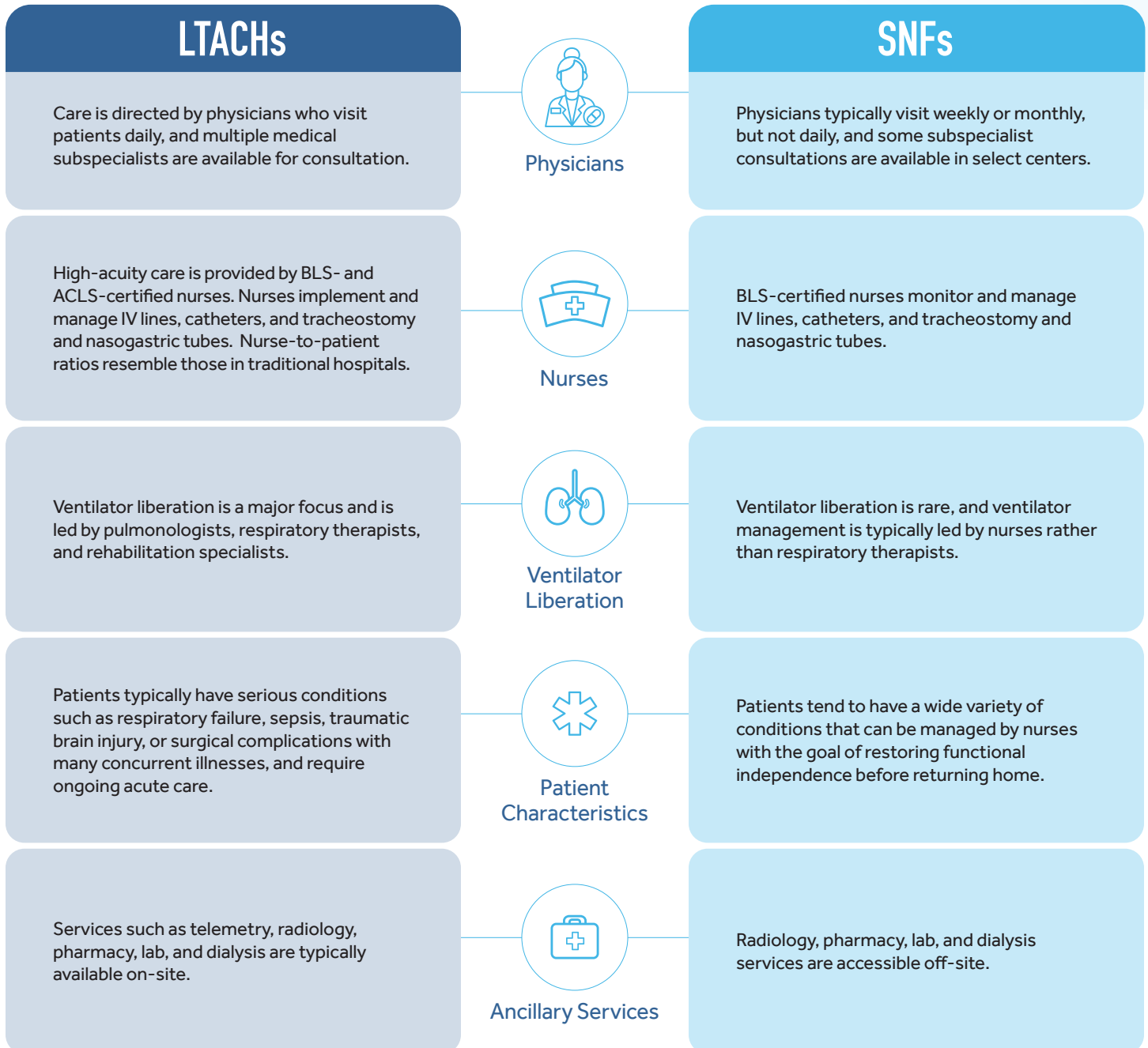


# 5 Setting Distinctions: LTACHs vs. SNFs

While long-term acute care hospitals (LTACHs) and skilled nursing facilities (SNFs) are both potential options for patients discharging from a hospital, they offer very different levels of care. The unique expertise and resources available at LTACHs allow them to improve outcomes for medically complex patients. Below are 5 key differences between LTACH and SNF settings that impact medically complex patient recovery and readmission rates.



## NEXT LEVEL CARE. NEXT LEVEL RECOVERY.

Cornerstone Specialty Hospitals provide specialized long-term acute care and rehabilitation for medically complex patients.

Learn more about how Cornerstone Specialty Hospitals can improve outcomes for medically complex patients at [www.CornerstoneHospitals.com](http://www.CornerstoneHospitals.com).